

# LOGIK

## Wireless Optical Mouse

### Quick Start Guide

LM212R  
LM212B  
LM212V  
LM212O  
LM212P



**Thank you** for purchasing your new Logik Wireless Optical Mouse. Please familiarise yourself with this Quick Start Guide to enjoy all the exciting features offered.

### 1 Unpacking

Remove all packaging from the unit. Retain the packaging. If you dispose of it, please do so according to the local regulations. The following items are included:



Mouse



RF Receiver  
(PN.: MRN)



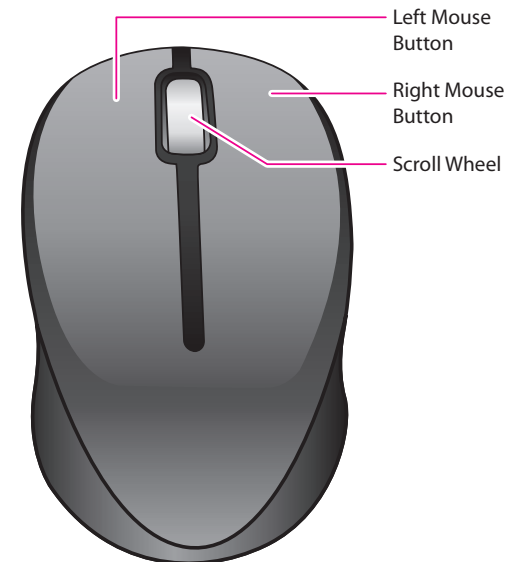
AAA Batteries x 2



Quick Start Guide  
(PN.: LM212R\_B\_V\_O\_P-001)

If items are missing or damaged, please contact Partmaster (UK only).  
Tel: 0844 800 3456 for assistance.

### 2 Product Overview

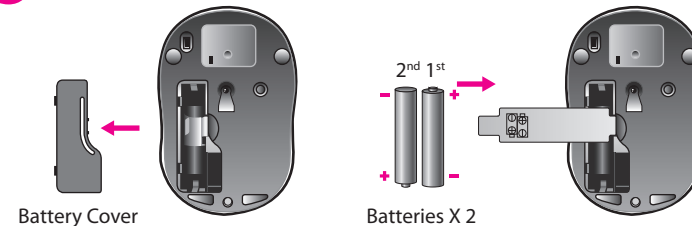


Left Mouse Button

Right Mouse Button

Scroll Wheel

### 3 Installing the Batteries

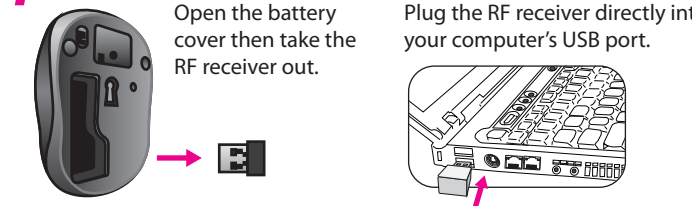


Battery Cover

Batteries X 2

Slide the battery cover off and insert 2 x AAA batteries. Close the battery cover. Ensure batteries are inserted with the correct polarities.

### 4 Connect the USB Receiver



Open the battery cover then take the RF receiver out.

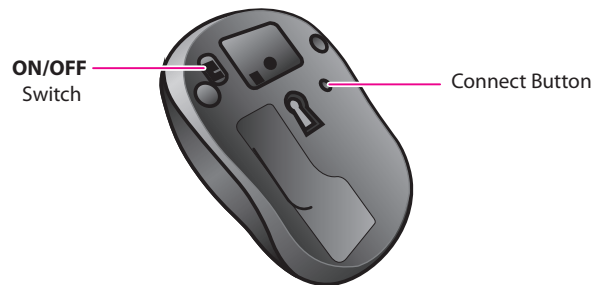
Plug the RF receiver directly into your computer's USB port.

## 5 Activate the Wireless Mouse

1. Switch the **ON/OFF** button to power on the mouse.
2. If the mouse does not respond, use a blunt pencil to press the **Connect** button to activate the connection between the mouse and the RF receiver. If the mouse does not work after 10 seconds, pair them again. (The receiver has an auto pairing function.)

When the mouse is successfully paired with the receiver, the mouse is ready to use.

When the mouse batteries are low on power, the LED indicator will begin flashing.



## 6 Troubleshooting

### Mouse or Keyboard Not Working:

1. Check that the power switch is in the “**ON**” position.
2. Make sure the Nano Receiver is plugged into a USB port and the computer is on or try the Nano Receiver in a different USB port.
3. Check battery installation. Replace the batteries if needed.
4. If mouse performance is slow or intermittent around a wireless network, unplug the Nano Receiver from the USB port and then reinsert it. Switch the **ON/OFF** button again on the bottom of the mouse to reactivate it. Repeat the connection procedure. You can also try moving the mouse closer to the Nano Receiver.
5. If the mouse is moving erratically change the working surface the mouse is operating on.

## 7 Safety Warnings

### Optical :

Never point the optical sensor towards the face, particularly the eyes, to avoid possible injury.



While the mouse is in use, the optical light is visible to the naked eye. Be careful not to look directly into the emitter hole while the mouse is active.

### Wireless Devices :

- Before boarding any aircraft or packing a wireless device in luggage that will be checked in, remove the batteries from the wireless device.
- Wireless devices can transmit radio frequency (RF) energy, whenever batteries are installed and the wireless device is turn on.

### Battery-Powered Devices :

Improper use of batteries may result in battery fluid leakage, overheating, or explosion. Leaked battery fluid is corrosive and may be toxic. It can cause skin and eye burns, and is harmful if swallowed.

### To reduce the risk of injury :

- Keep batteries out of the reach of children.
- Do not heat, open, puncture, mutilate, or dispose of batteries in fire.
- Do not mix new and old batteries or batteries of different types
- Do not allow metal objects to touch the battery terminals on the device; they can become hot and cause burns.

Features and specifications are subject to change without prior notice.

Windows is a registered trademark of Microsoft Corporation in the United States and other countries.

DSG International Sourcing declares that the wireless keyboard and mouse comply with the essential requirements and other relevant provisions of Directive 1999/5/EC.

### Notes for battery disposal:

The batteries used with this product contain chemicals that are harmful to the environment. To preserve our environment, disposal of used batteries according to your local laws or regulations. Do not dispose of batteries with the normal household waste.

For more information, please contact the local authority or your retailer where you purchased the product.

**Partmaster**  
co.uk

Visit [Partmaster.co.uk](http://Partmaster.co.uk) today for the easiest way to buy electrical spares and accessories. With over 1 million spares and accessories available we can deliver direct to

your door the very next day. Visit [www.partmaster.co.uk](http://www.partmaster.co.uk) or call 0844 800 3456 (UK customers only) Calls charged at National Rate.



This symbol on the product or in the instructions means that your electrical and electronic equipment should be disposed at the end of its life separately from your household waste. There are separate collection systems for recycling in the EU.

For more information, please contact the local authority or your retailer where you purchased the product.

DSG Retail Ltd. • Maylands Avenue • Hemel Hempstead  
Herts • HP2 7TG • England

(P.N.: LM212R\_B\_V\_O\_P-001)