

# LOGIK

## 2.0 PC Speakers

Quick Start Guide  
L20SP10

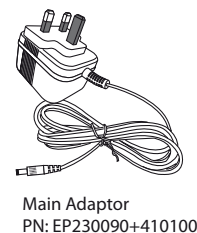
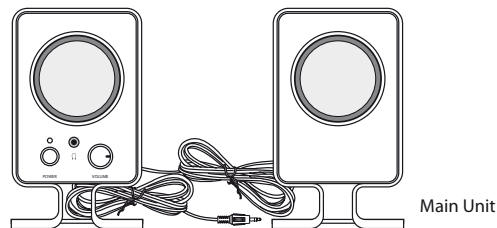


**Congratulations** on the purchase of your new Logik 2.0 PC Speakers.

Before commencing the installation and set up, please check that you have all the items and familiarise yourself with this Quick Start Guide.

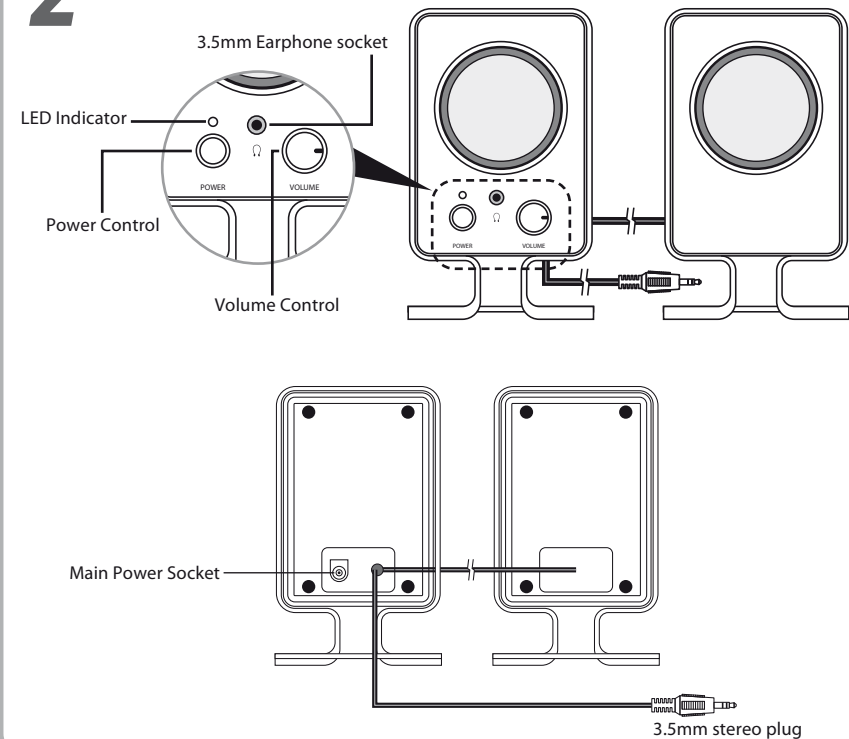
### 1 Unpacking

Remove all packaging from the unit. Retain the packaging. If you dispose of it, please do so according to the local regulations. The following items are included:

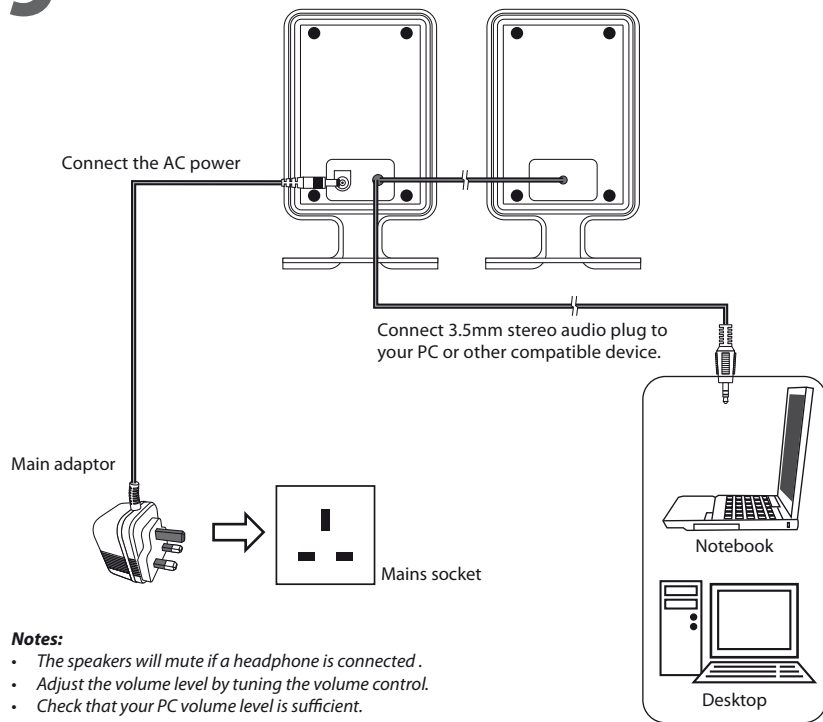


If items are missing or damaged, please contact Partmaster (UK only). Tel: 0844 800 3456 for assistance.

### 2 Product Overview



## 3 Connection



## 4 Important Safety Instructions

- Read all instructions before using these speakers and keep them for future reference.
- Use only voltage specified on the rating label of the speaker.
- Do not place speakers close to heat sources, such as radiators and heaters.
- These speakers are intended for household use only and not for commercial or industrial use.
- Use these speakers only as described in this Quick Start Guide. Any other use is not recommended by the manufacturer and may cause fire, electric shock or injury.
- Always operate on a flat horizontal surface. Do not place the speakers on an unstable table, stand, tripod or bracket.
- If the mains cable is damaged, it must be replaced by a qualified electrical person in order to avoid a hazard.
- Do not use these speakers outdoors, or on wet surfaces. Avoid spilling liquid on the speakers. Keep the speakers dry and avoid contact with damp or wet areas.
- Do not block the openings in the speaker cabinets, never push objects into the speaker vents or slots, and provide sufficient space around the speakers for proper ventilation.
- Only use attachments/accessories specified by the manufacturer.
- For added protection during lighting storms, unplug the speakers from the mains socket and turn off the computer.
- Unplug the speakers when it is not in use for a long period of time.
- Do not expose these speakers to rain or moisture to reduce the risk of electric shock.
- Place the speakers away from strong electro magnetic environments.
- These speakers are not intended for use by persons (including children) with reduced physical, sensory or mental capabilities, or lack of experience and knowledge, unless they have been given supervision or instruction concerning use of the speakers by a person responsible for their safety.
- Children should be supervised to ensure that they do not play with the speakers.

## 5 Specification

Output Power (Total): 4W

Speaker Driver Unit: 2.5" 4Ω 3W x 2

Frequency Response Range: 100Hz – 18KHz

Size (in mm): Speaker (LxWxH): 88mm x 65mm x 147mm

Power Supply Input: AC-AC adapter

We continually strive to improve our products, specifications may change without prior notice.

**Partmaster**  
CO.UK

Visit [Partmaster.co.uk](http://Partmaster.co.uk) today for the easiest way to buy electrical spares and accessories. With over 1 million spares and accessories available we can deliver direct to your door the very next day. Visit [www.partmaster.co.uk](http://www.partmaster.co.uk) or call 0844 800 3456 (UK customers only) Calls charged at National Rate.



This symbol on the product or in the instructions means that your electrical and electronic equipment should be disposed at the end of its life separately from your household waste. There are separate collection systems for recycling in the EU. For more information, please contact the local authority or your retailer where you purchased the product.