

# JVC

## Quick Start Guide

# 22" LED TV WITH DVD PLAYER

### LT-22C540

**Thank you** for purchasing your new JVC TV.

Your new TV incorporates the latest technology to enhance your viewing experience. We would suggest that you allow about 20 mins for initial setup.

Please follow this guide for a successful first time installation.



The latest eco-friendly power-saving technology will switch off the TV if device is left on and idle for 4 hours. Please refer to "Auto Standby" under the "Time Settings" section of the instruction manual for more detail.

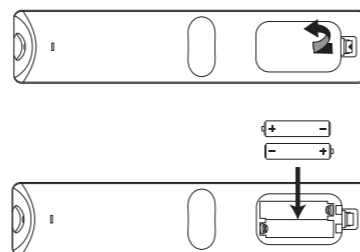
### 1 Unpacking

Remove all packaging from the unit. Retain the packaging. If you dispose of it please do so according to any local regulations.

- ✓ TV
- ✓ TV Stand Support
- ✓ TV Base
- ✓ Remote Control / AAA Batteries x 2
- ✓ Rear Spacers x 4
- ✓ Screw A x 1
- ✓ Screw B x 4
- ✓ Instruction Manual
- ✓ Quick Start Guide

### 2 Operating Your Remote Control

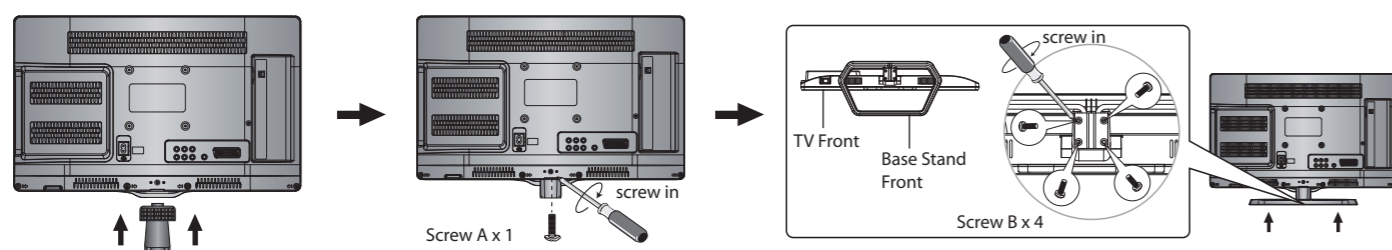
- Press and lift the back cover to open the battery compartment of the remote control.
- Insert two AAA size batteries. Close the battery compartment cover.



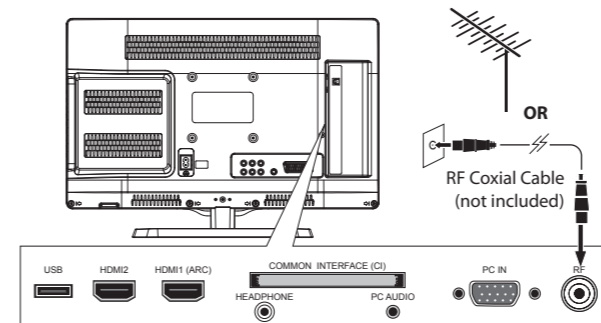
Install the batteries correctly by following the polarity (+ and -) indications in the battery compartment.

### 3 Installing the Base Stand

- Lay the TV down on a flat surface with the back side facing up, and ideally at the edge of a table so that the base of the TV slightly overhangs on it. Please make sure a soft cushioned material (such as a pillow or thick piece of foam) is placed beneath the screen.
- To install the TV stand, first attach the stand support to the TV by using screw A. Align with the screw hole then use screws to fix the stand support to the TV.
- To install the base stand, align the screw holes, then secure with a screw driver (not included) using the 4 screw B provided.



### 4 Connecting the Aerial

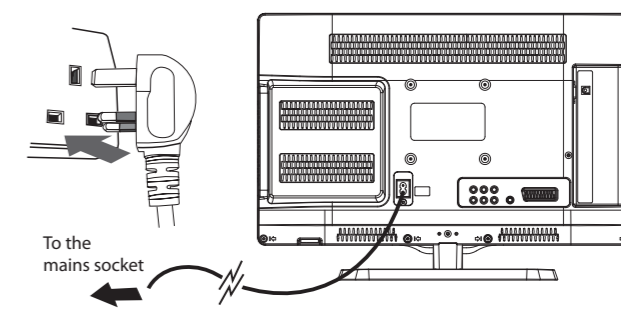


Connect one end of the RF coaxial cable to the aerial socket on the wall and the other end of the cable to the RF (75Ω) socket at the rear right side of your TV.



Do not connect the TV to the mains supply until you have completed all the connections.

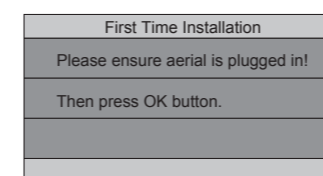
### 5 Connecting the Mains Socket



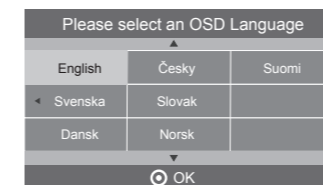
- Connect the mains cable to the mains socket after you have completed all the connections.
- At this stage, the TV switches to standby mode. The red LED indicator will illuminate on the front panel of the TV.
- In standby mode, press the **Power** button on the right side panel of the TV or on the remote control to turn the TV on. The red LED indicator will turn blue.

### 6 Turning the TV On for the First Time

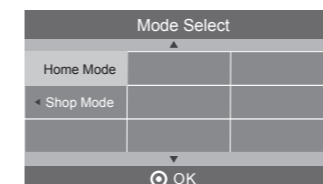
The first time you turn the TV on, it will go straight into the **First Time Installation** menu.



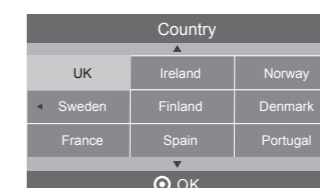
- Press the **OK** button to start **First Time Installation** menu.



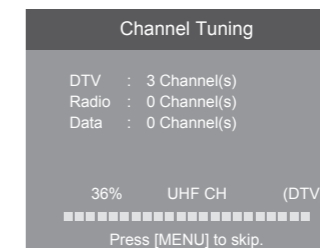
- Press the **Left/Right** buttons to select your desired language to be displayed on the menu. The default on-screen menu language is set as **English**. Press the **OK** button to confirm.



- Press the **Up/Down** buttons to select your desired mode and then press the **OK** button. Press the **Left** button to select **Yes** to confirm or the **Right** button to select **No** to cancel and return to the **Mode Select** menu.



- Press the **Left/Right/Up/Down** buttons to select the country where you will operate the TV. Press the **OK** button to confirm.



- DTV Channel tuning will commence. This operation may take up to 3 minutes. The display will show the progress of the tuning and the number of channels found.

### 7 Target Region Setting

During tuning your TV may have received signals from more than one transmitter. If this has occurred the Target Region Descriptor screen will be displayed. This will enable you to select the correct regional transmission for the local news service that you require.

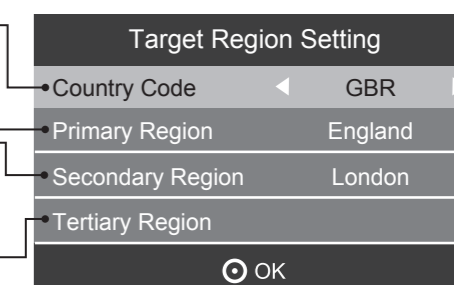
Press the **Left/Right** buttons to adjust each option's setting and then press the **OK** button to confirm.

This will be shown as GBR for the UK.

This will show the regional country (e.g. England, Wales, Scotland, NI).

This will allow you to set the region for your local news service on BBC and ITV (e.g. London, Beds and Cambs etc).

You may receive signals from more than one transmitter within the Secondary Region, (e.g. Beds and Cambs may have Luton or Sandy Heath).



**Well done,** your new TV is now ready to use. You will find that there are many exciting features available. To get to know all these features, please take some time to read the instruction manual provided with your TV.

If after reading the instruction manual you have additional questions related to the use of your TV please call our UK Call Centre on **0844 561 1234**. Our UK Customer Contact Centre is open Monday-Saturday 8am-8pm or Sunday 8am-6pm.